

PULSAR+ Carpet Extractor

Item# PE060-G15-U (Pulsar+ – 15 gallons)



15 Gallon
Capacity



Cold -
Not Heated



100
p.s.i



Single Airwatt
Motor

Powr-Flite®

A NEW FRONTIER IN PORTABLE EXTRACTORS:

PERFORMANCE AND PROTECTION

Featuring the industry's only vacuum motor designed specifically for wet pickup, providing unmatched performance and moisture protection.

SIGNIFICANTLY REDUCED DOWNTIME

Purpose-built design provides quick access to internal components and drastically reduces downtime associated with service and maintenance.

FREEDOM TO MOVE

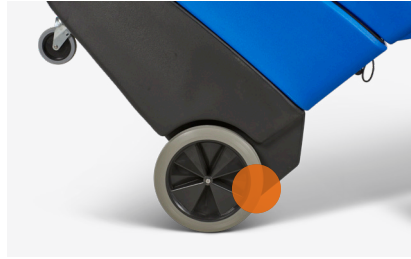
Unparalleled storage and mobility, taking the hassle out of moving from room to room and job to job.

SPECS:

PULSAR+	
MODEL	PE060-G15-U
SOLUTION TANK	15 Gallons
VAC MOTOR	Single Airwatt (625 Watts)
CFM	133
WATERLIFT	125"
SOLUTION PUMP (PSI)	100
HEATER	None
MAX HEAT	N/A
VACUUM/SOLUTION HOSE	20 Ft. Outsider Hose
VACUUM HOSE DIAMETER	1.5"
CORD CONFIGURATION	Single Circuit
FRONT WHEELS	4" Casters
REAR WHEELS	12"
WEIGHT (LBS)	136
DIMENSIONS (LxWxH)	36.5"x23.5"x45.5"

ACCESSORIES

PART #	DESCRIPTION
WANDS	
PFX-KIT1	1 Jet Wand, 200 PSI
PFX-KIT2	1 Jet Wand, 500 PSI
WW1000-2	Wonder Wand™, 2 Jet, 1000 PSI
HAND TOOLS	
AA192	Stair Tool, 6" Head, 800 PSI
AA161	Detailer Tool, 3 1/2" Head, 500 PSI
AA144DC	Upholstery Tool, 4" Head, 500 PSI



STAIR CLIMBER

Large 12" rear wheels and unique stair-assist design take the strain out of sliding the unit up and down stairs.



LOADING WHEELS

Handle-mounted transport wheels for easy loading and unloading.



ON-BOARD STORAGE

Keep everything you need for the job on-board with dedicated storage for the wand, hose and power cords.



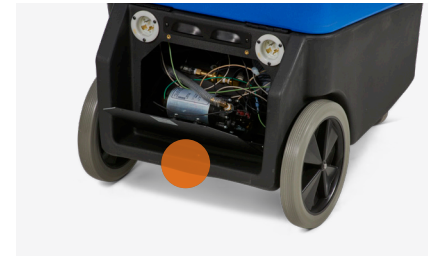
SIMPLE OPERATION

Simple to use and understand controls, all user-facing and conveniently placed within reach.



CLAMSHELL DESIGN

Easy access to internal components, drastically reducing downtime for repairs and maintenance.



REAR SERVICE PANEL

Immediate access to the pump for service, if needed.

THE AIRWATT MOTOR DIFFERENCE

- The Pulsar's Airwatt motor is the industry's only purpose built vacuum motor for wet pick-up, providing unmatched performance and protection.
- Patent-pending, sealed bearings prevent exposure to cleaning chemicals and moisture for longer motor life.
- Curved "Eternity" brushes provide three times longer motor brush life (1,500+ hours).

Bearings moved to clean dry area of motor

Additional protection from relocated cooling fan (between fan system and bearing)

Isolated with a seal

Additional bypass prohibits water near dry area - secondary bearing protection

